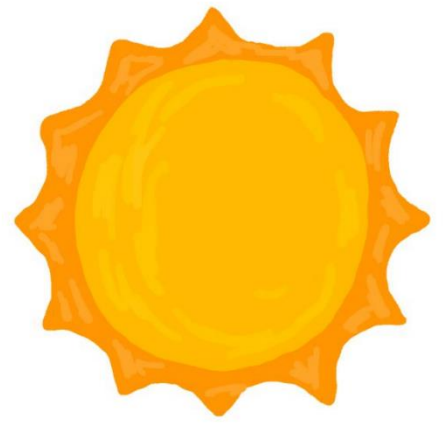


Η η

όπως



Όνομα: _____

1. Γράφω το Η,η

Handwriting practice lines for the Greek letter Η,η. The first line shows two dashed uppercase Η characters on a set of three horizontal lines (top, middle-dashed, bottom). The second line shows two dashed lowercase η characters on the same set of lines. Each character has a black dot indicating the starting point for writing.

2. Σχηματίζω συλλαβές με το η και διαβάζω δυνατά

A diagram for syllable formation. At the top, the Greek letter η is enclosed in a rounded rectangle. Seven arrows point downwards from this box to seven separate rounded rectangles below, each containing a different Greek consonant: τ, π, κ, λ, μ, ν, and σ. Below each of these seven boxes is a horizontal dashed line, intended for writing the syllable formed by the combination of the letter η and the consonant above it.

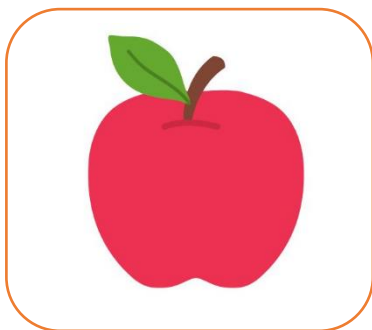
3. Κυκλώνω όλα τα Η η

Δ φ ξ ζ Ξ Κ λ κ ζ Κ μ μ δ ν ζ ι Μ κ ν Α ζ κ ν Μ ι ν δ ι ζ μ β
μ χ ψ μ ν δ β μ μ μ β δ ν α ν Μ η δ κ Ι Γ κ δ θ Κ η ζ θ Ψ η δ
μ ι δ Μ β δ μ η α μ α η π ν ξ α κ λ η α α μ μ ε Υ Ι μ σ

4. Συμπληρώνω τα η στα κενά των λέξεων, βάζω τόνο και διαβάζω



___ λιος



μ ___ λο



ν ___ σί



τ ___ λε ό ρ α σ ___



πο τ ___ ρι



κ ___ ποσ