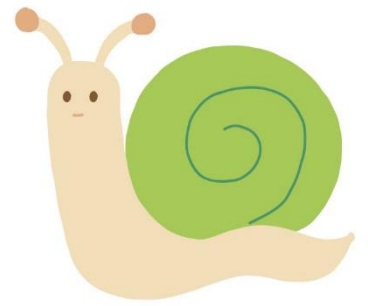


Σ

σ

ς



1. Αντιγραφή

Handwriting practice lines for the Greek letter sigma. Each line consists of a solid top line, a dashed middle line, and a solid bottom line. The first line shows a dashed uppercase sigma (Σ) with a starting dot on the top line and an arrow indicating the stroke direction. The second line shows a dashed lowercase sigma (σ) with a starting dot on the middle line and an arrow indicating the stroke direction. The third line shows a dashed lowercase sigma (ς) with a starting dot on the middle line and an arrow indicating the stroke direction. Each line has three black dots on the middle dashed line for starting points.

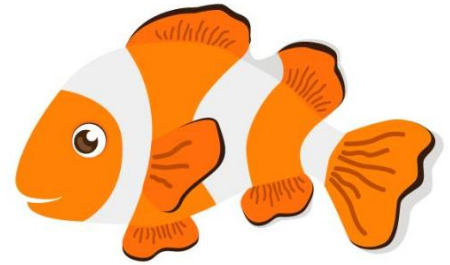
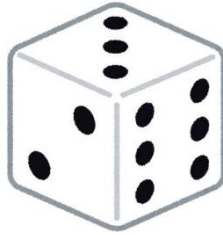
2. Βρίσκω το Σ σ ς και το βάζω σε κύκλο

Σ α ξ ι ε κ ξ ζ Σ κ λ ξ β ι ζ η θ ο ξ π ω μ κ ι ζ δ ι ζ δ ν
ι ε ξ α ζ ξ χ χ ψ θ ε δ ξ μ ζ δ π ψ ζ ι φ ν ε η φ α Σ ω ν
φ ξ ι ν Α Κ ν φ η θ ε η π Α Δ Φ Ξ Ι ν ψ ζ ψ μ ν δ κ Ι Ξ

3. Σχηματίζω συλλαβές με το σ και διαβάζω δυνατά

A diagram for syllable formation. On the left, a box contains the Greek letter sigma (σ). Four arrows point from this box to four stacked boxes containing the vowels alpha (α), epsilon (ε), omicron (ο), and iota (ι). To the right of these boxes are four horizontal lines for writing the syllables.

4. Κυκλώνω τις λέξεις που αρχίζουν από σ



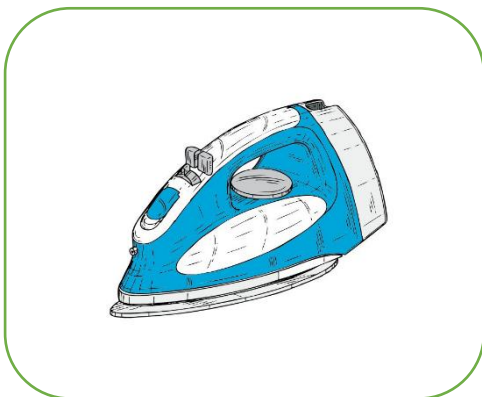
5. Γράφω τη συλλαβή που λείπει



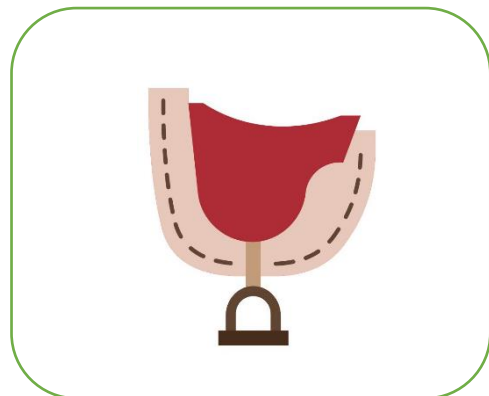
νο __ κό μα



__ κα



__ δε ρο



__ λα